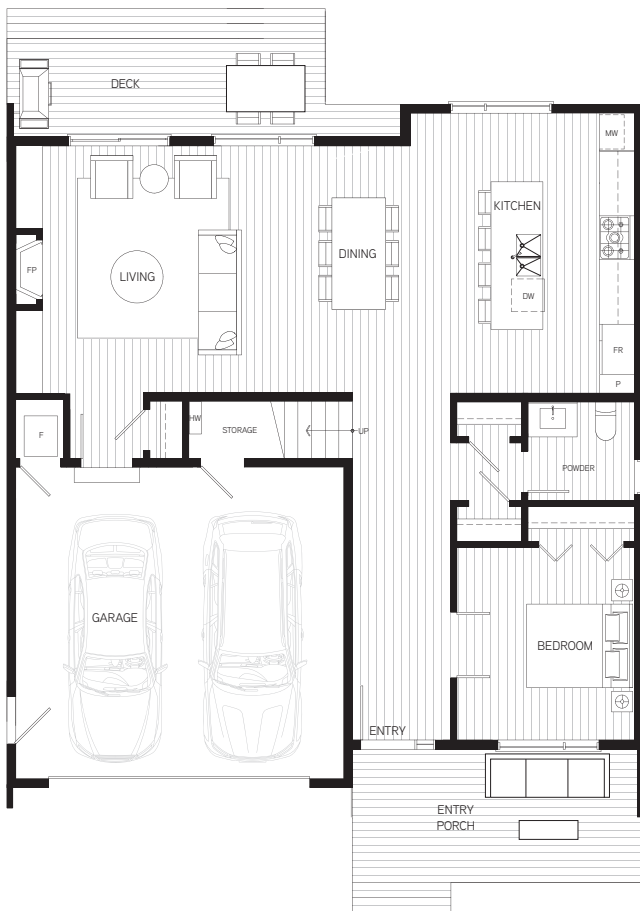


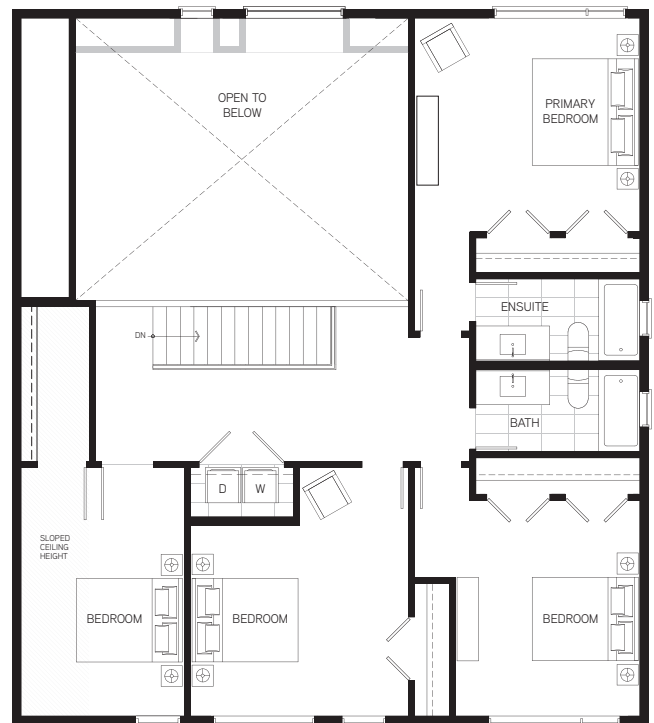
THE MARITIME HOUSE (PITCHED ROOF)

PLAN B3

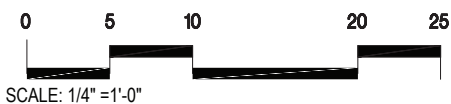
5 BED + 2.5 BATH · TOTAL 2,361 SQ FT



GROUND FLOOR



UPPER FLOOR



*Note that there are variations in patio/balcony extents and column locations. Please see the Sales Team for more information. The developer reserves the right to make changes and modifications to the information contained herein without prior notice. Artistic renderings are representational only and may not be accurate. Sizes, dimensions, and materials are approximate and plans may be mirrored. There may be variations of position of front entry and/or garage in some homes. Square footage does not include garage. This is not an offering for sale. Such an offering can only be made by a disclosure statement. E.&O.E. October 2024.